

Erikson Institute

The *Early Development Instrument*: The Village that Raises a Child

And how are the children?

“Kasserian ingera”
Maasai Traditional Greeting

Early Development Instrument Overview

- Population Focus
 - Community Needs Assessment
 - Kindergarten Census
- Checklist of 103 questions- Presented as Maps/Tables
 - Completed by Kindergarten teachers
 - Typically administered triennially second half of year
- Precise Data
 - Holistic snapshot
 - Measures five developmental domains

(Janus & Offord, 1997; Janus, Brinkman & Duku, 2011)

Developmental Domains/Sub-domains

VULNERABLE ON 1 OR MORE SCALES



Physical Health
& Well-Being



Gross and fine motor skills

Physical readiness for the school day

Physical Independence



Social
Competence



Respect and responsibility

Approaches to learning

Overall social competence

Readiness to explore new things



Emotional
Maturity



Prosocial and helping behaviour

Hyperactive and inattentive behavior

Anxious and fearful behaviour

Aggressive behaviour



Language & Cognitive
Development



Basic numeracy skills

Basic literacy skills

Advanced literacy skills

Interest in math/reading and memory



Communication Skills
& General Knowledge



No Subscales

Image Courtesy of Human Early Learning Partnership at the University of British Columbia (HELP)

Purpose of the EDI

EDI results are used to:

- Look **back** and assess how the community can better support early childhood development and prepare children for school; and
- Look **forward** to inform how to address the needs of the incoming class of kindergarten students as they progress through school.

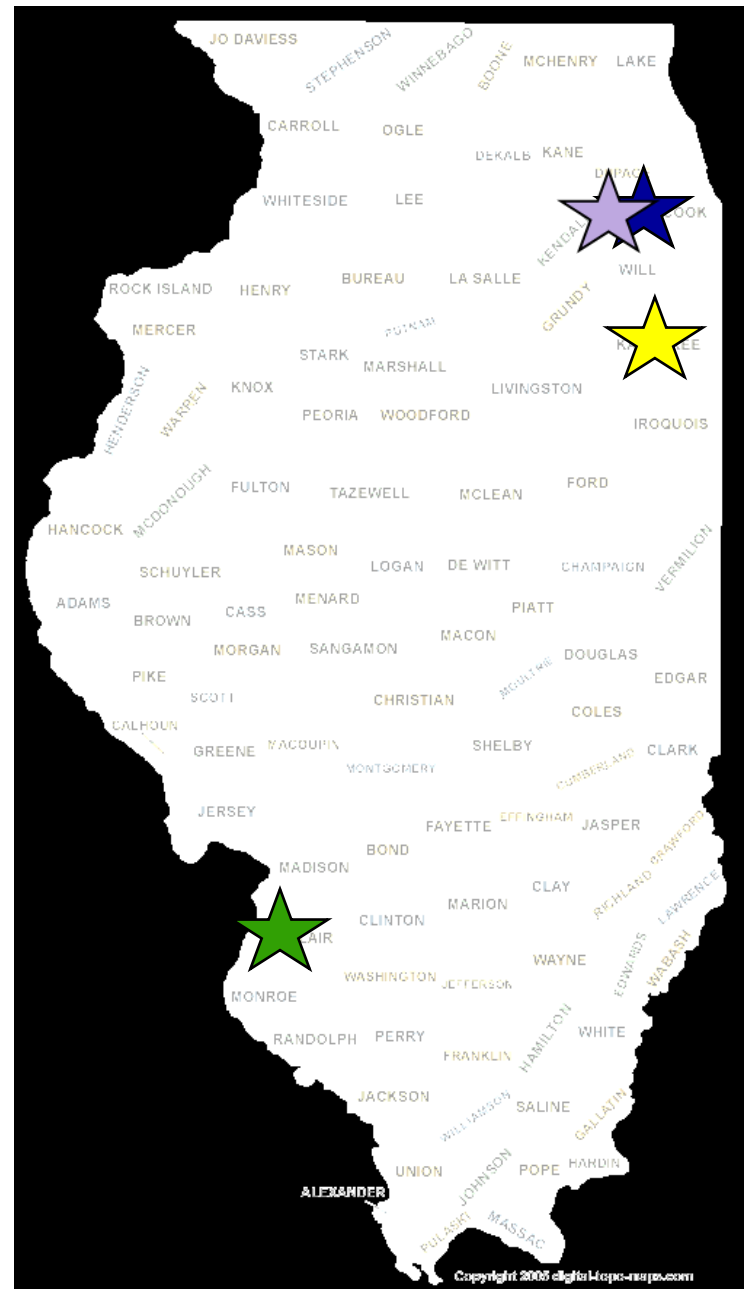


(Source: HELP)

Erikson and the EDI

Phase I & II Partner Communities

- ★ Greater East St. Louis Early Learning Partnership (N=428)
- ★ Success by 6 Coalition of Kankakee County (N=691)
 - Bourbonnais (Village)
 - Bradley (Village)
 - Kankakee (City)
- ★ Austin Coming Together
- ★ Collaboration for Early Childhood of Oak Park

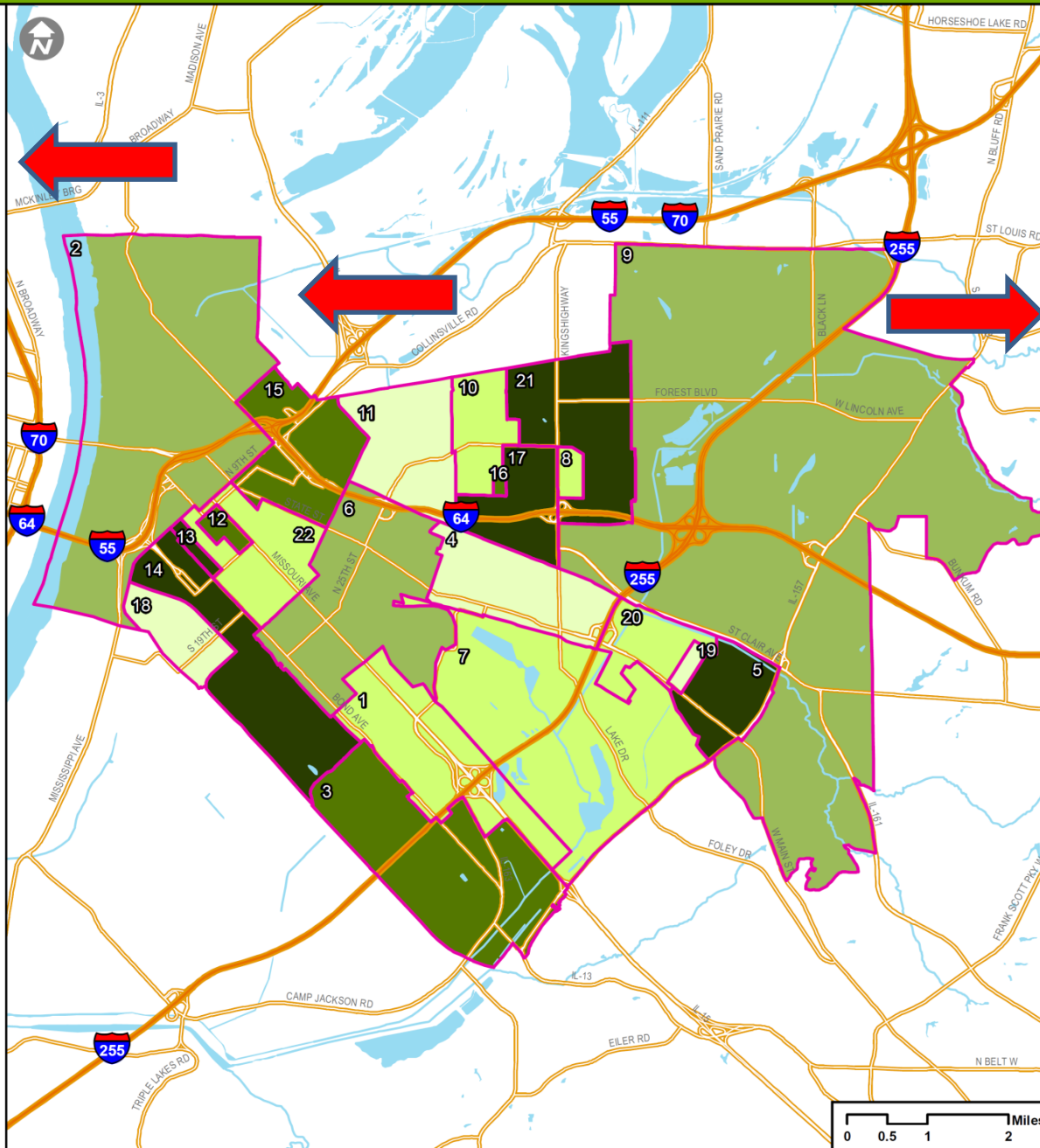


Greater East St. Louis

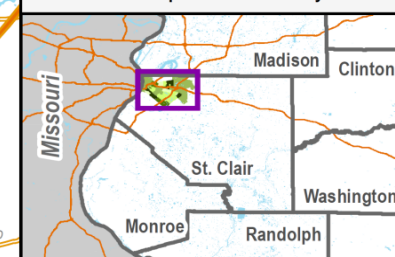
EDI 2017: Children Vulnerable on One or More Developmental Domains in East St. Louis Neighborhoods

Neighborhoods: Percentage Vulnerable on One or More Domains

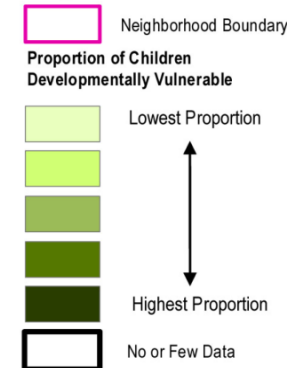
ID	Neighborhood	%
1	Alorton	24%
2	CBD	29%
3	Centreville	36%
4	Dayton / Wedgewood	19%
5	Edgemont	45%
6	Fairlawn / Claremont / Beacon Heights	26%
7	Frank Holten State Recreation Area	20%
8	Hallows Ave. / Vassar Ave.	20%
9	I-64 / IL-157	29%
10	Lansdowne East	24%
11	Lansdowne West	7%
12	Lincoln Middle School	38%
13	North End	44%
14	North End / Alta Sita	47%
15	Olivette and Emerson Park	38%
16	Roosevelt	36%
17	Rosemont	46%
18	Rush City / South End	18%
19	Southeast State Street Estates	9%
20	State Street Estates and Parkside	25%
21	Washington Park	54%
22	Winstanley Industrial Park	21%
	Neighborhood-wide	30%



Inset Map of St. Clair County



Legend



Transforming
Early
Childhood
Community
Systems

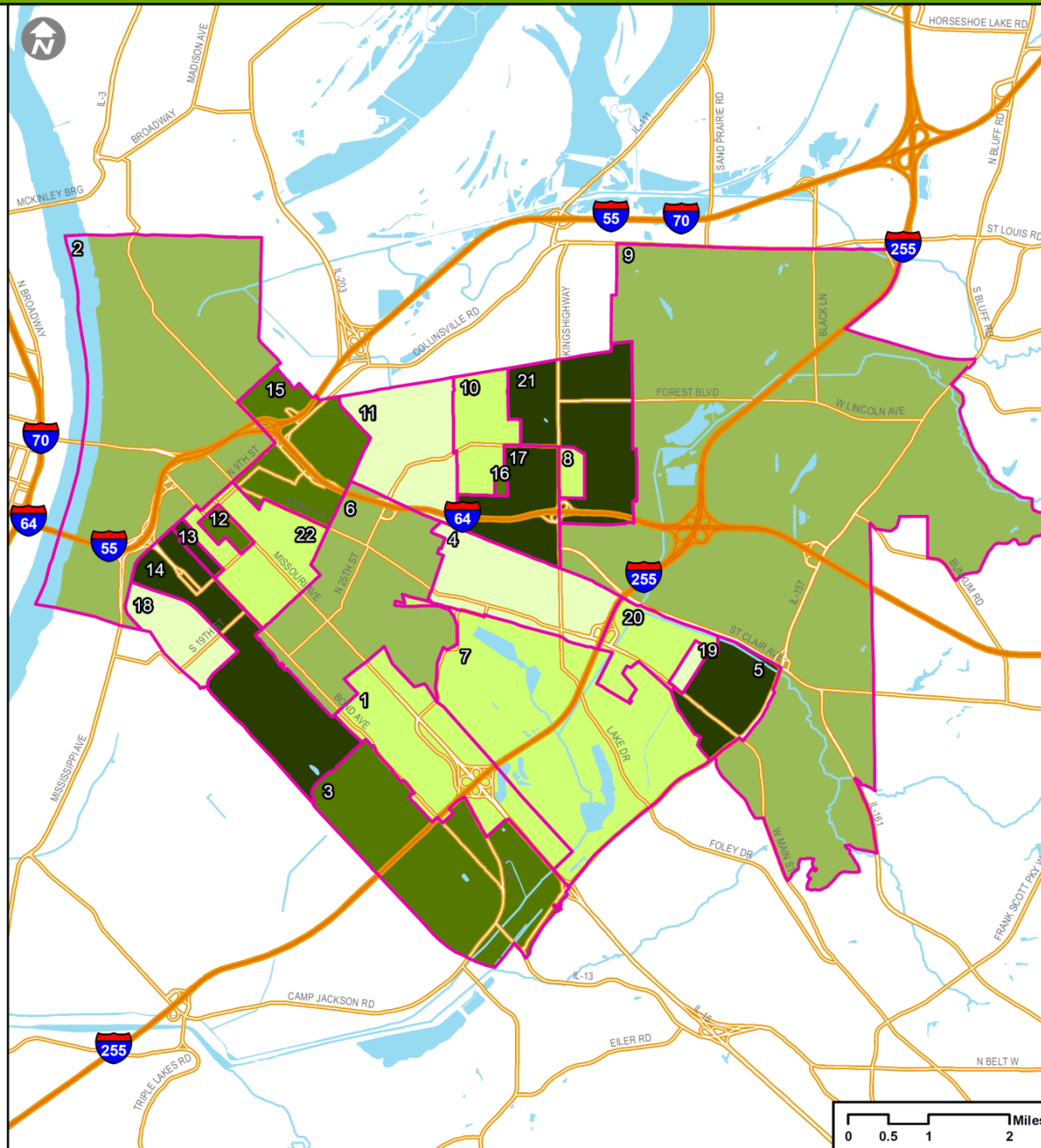
THE SCIENCE FOR A BETTER START

TECCS@mednet.ucla.edu

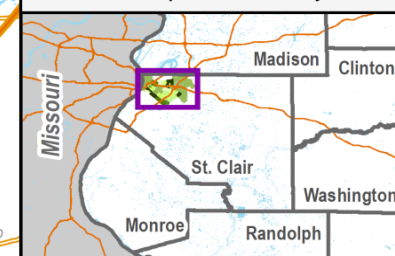
EDI 2017: Children Vulnerable on One or More Developmental Domains in East St. Louis Neighborhoods

Neighborhoods: Percentage Vulnerable on One or More Domains

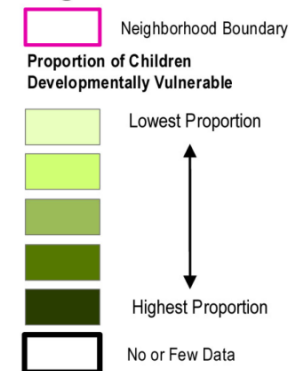
ID	Neighborhood	%
1	Alorton	24%
2	CBD	29%
3	Centreville	36%
4	Dayton / Wedgewood	19%
5	Edgemont	45%
6	Fairlawn / Claremont / Beacon Heights	26%
7	Frank Holten State Recreation Area	20%
8	Hallows Ave. / Vassar Ave.	20%
9	I-64 / IL-157	29%
10	Lansdowne East	24%
11	Lansdowne West	7%
12	Lincoln Middle School	38%
13	North End	44%
14	North End / Alta Sita	47%
15	Olivette and Emerson Park	38%
16	Roosevelt	36%
17	Rosemont	46%
18	Rush City / South End	18%
19	Southeast State Street Estates	9%
20	State Street Estates and Parkside	25%
21	Washington Park	54%
22	Winstanley Industrial Park	21%
	Neighborhood-wide	30%



Inset Map of St. Clair County



Legend



Transforming
Early
Childhood
Community
Systems

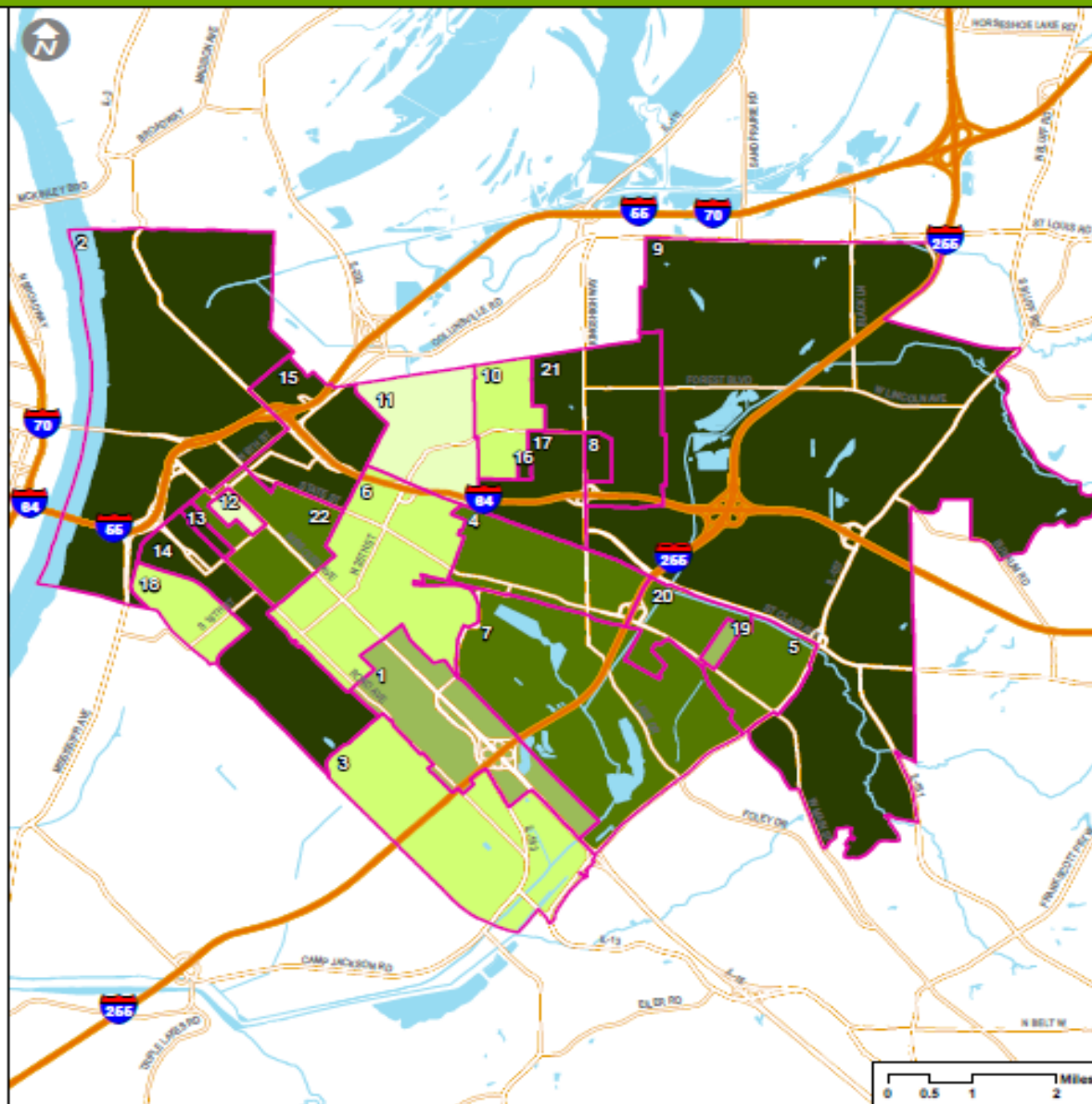
THE SCIENCE FOR A BETTER START

TECCS@mednet.ucla.edu

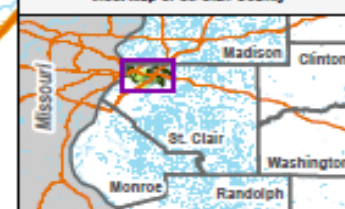
EDI 2017: Children Vulnerable in the Social Competence Domain in East St. Louis Neighborhoods

Neighborhoods: Percentage Vulnerable in the Social Competence Domain

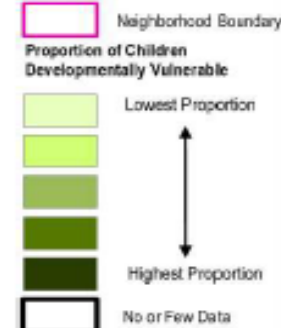
ID	Neighborhood	N	%
1	Alorton	2	12%
2	Gompers	3	18%
3	Centreville	2	7%
4	East Side	2	13%
5	Edgemont	3	14%
6	25th Street	3	8%
7	Frank Holten	3	15%
8	Caseyville Ave.	2	20%
9	Driver's License Facility	4	24%
10	Wyvetter Young	1	6%
11	Griffin Homes	0	0%
12	Lincoln Middle School	0	0%
13	John DeShields	6	24%
14	John Robinson	5	29%
15	Emerson Park	5	21%
16	Roosevelt	5	36%
17	Rosemont	5	38%
18	Rush City / South End	1	5%
19	Phoenix Court	1	9%
20	Parkside	2	13%
21	Washington Park	5	38%
22	Mount Sinai Village	3	13%
Neighborhood-wide		63	15%



Inset Map of St. Clair County



Legend



Social Competence

0% - 4%

5% - 8%

9% - 12%

13% - 16%

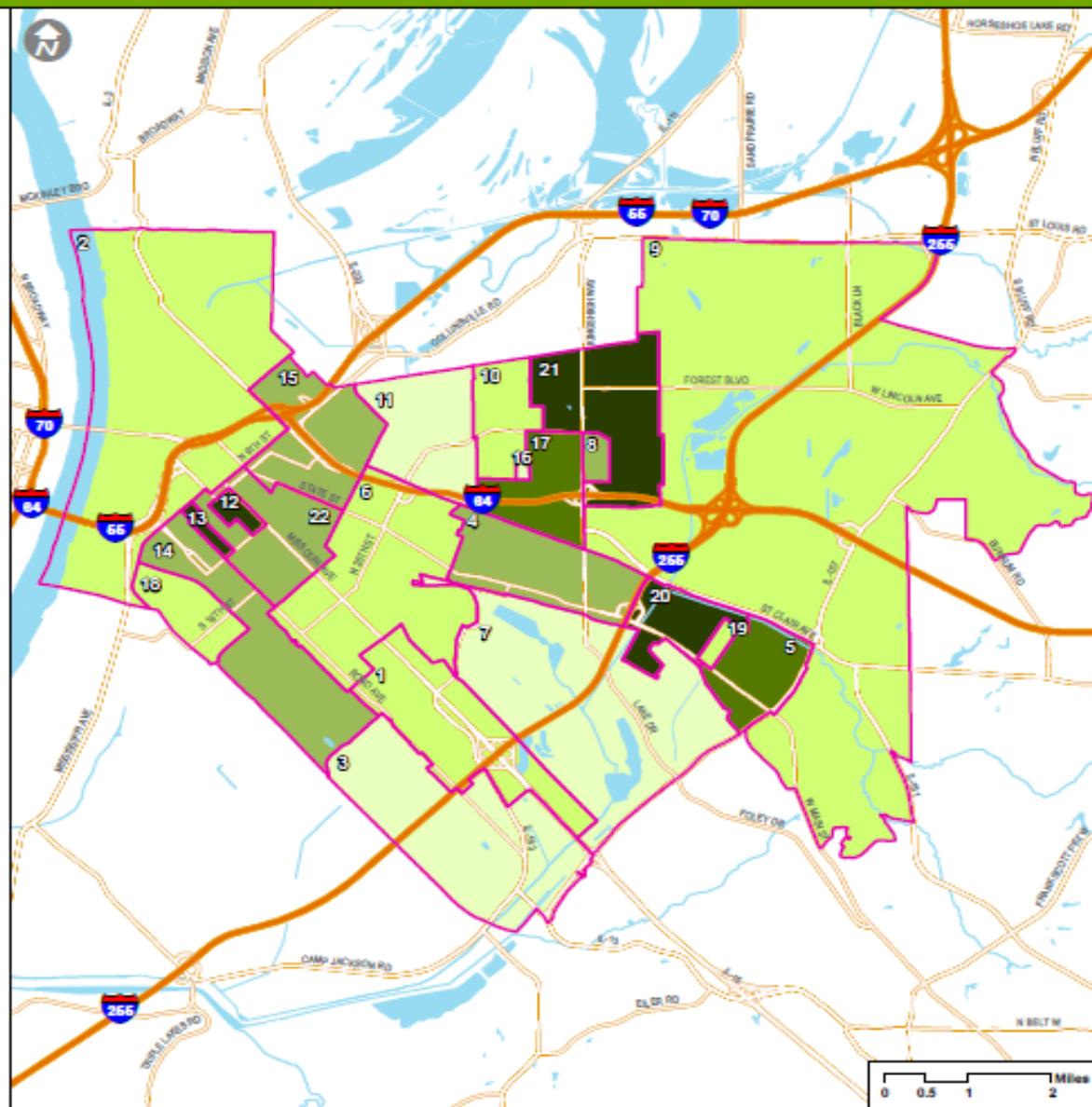
17% or more

TECCS@mednet.ucla.edu

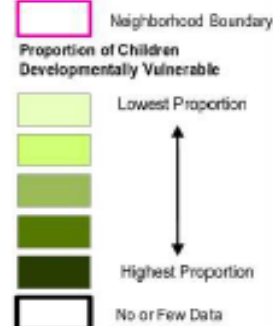
The UCLA Center for Healthier Children, Families and Communities, under license from McMaster University, is implementing the Early Development Instrument with its sub licensees in the US. The EDI is the copyright of McMaster University and must not be copied, distributed or used in any way without the prior consent of UCLA or McMaster. © McMaster University, The Offord Centre for Child Studies

EDI 2017: Children Vulnerable in the Emotional Maturity Domain in East St. Louis Neighborhoods

Neighborhoods: Percentage Vulnerable in the Emotional Maturity Domain			
ID	Neighborhood	N	%
1	Alorton	1	6%
2	Gompers	1	6%
3	Centreville	1	4%
4	East Side	2	13%
5	Edgemont	4	18%
6	25th Street	3	8%
7	Frank Holten	1	5%
8	Caseyville Ave.	1	10%
9	Driver's License Facility	1	6%
10	Wyvetter Young	1	6%
11	Griffin Homes	0	0%
12	Lincoln Middle School	4	19%
13	John DeShields	6	24%
14	John Robinson	2	12%
15	Emerson Park	3	13%
16	Roosevelt	0	0%
17	Rosemont	2	15%
18	Rush City / South End	2	9%
19	Phoenix Court	1	9%
20	Parkside	3	19%
21	Washington Park	4	31%
22	Mount Sinai Village	3	13%
	Neighborhood-wide	46	11%



Legend



Emotional Maturity

0% - 5%

6% - 9%

10% - 14%

15% - 18%

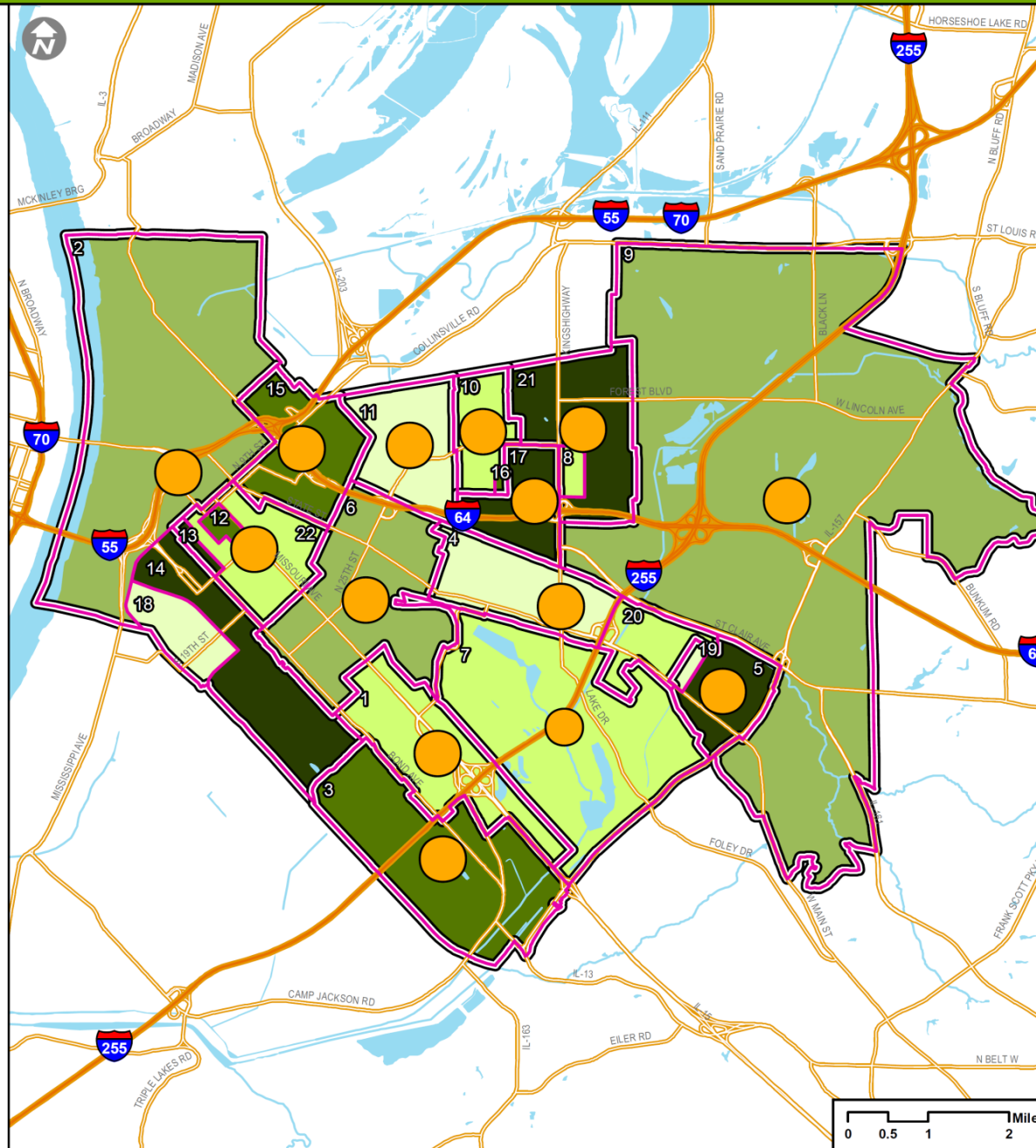
19% or more

TECCS@mednet.ucla.edu

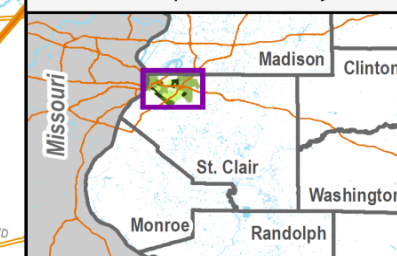
The UCLA Center for Healthier Children, Families and Communities, under license from McMaster University, is implementing the Early Development Instrument with its sub licensees in the US. The EDI is the copyright of McMaster University and must not be copied, distributed or used in any way without the prior consent of UCLA or McMaster. © McMaster University, The Offord Centre for Child Studies

Neighborhoods: Percentage Vulnerable on One or More Domains

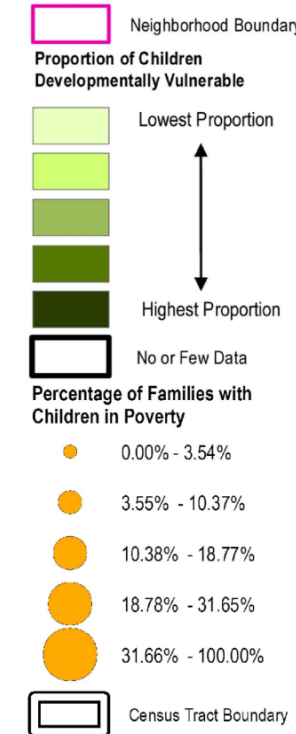
ID	Neighborhood	%
1	Alorton	24%
2	CBD	29%
3	Centreville	36%
4	Dayton / Wedgewood	19%
5	Edgemont	45%
6	Fairlawn / Claremont / Beacon Heights	26%
7	Frank Holten State Recreation Area	20%
8	Hallows Ave. / Vassar Ave.	20%
9	I-64 / IL-157	29%
10	Lansdowne East	24%
11	Lansdowne West	7%
12	Lincoln Middle School	38%
13	North End	44%
14	North End / Alta Sita	47%
15	Olivette and Emerson Park	38%
16	Roosevelt	36%
17	Rosemont	46%
18	Rush City / South End	18%
19	Southeast State Street Estates	9%
20	State Street Estates and Parkside	25%
21	Washington Park	54%
22	Winstanley Industrial Park	21%
Neighborhood-wide		30%



Inset Map of St. Clair County



Legend



Transforming Early Childhood Systems

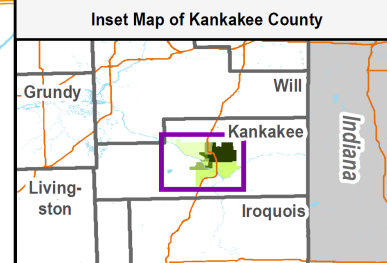
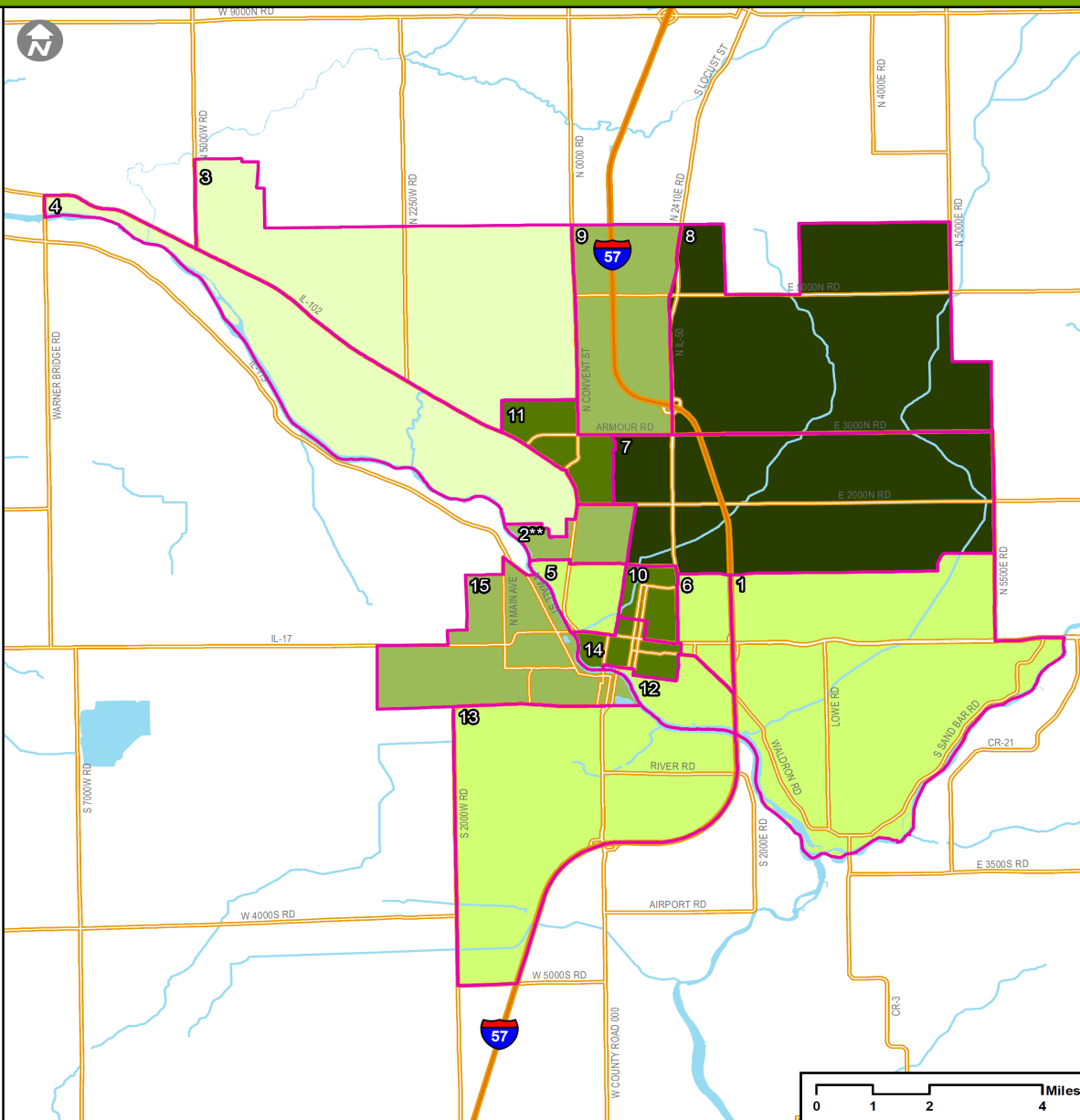
THE SCIENCE FOR A BETTER START
TECCS@mednet.ucla.edu

Kankakee County

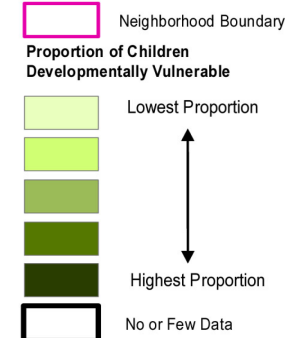
EDI 2017: Children Vulnerable on One or More Developmental Domains in Kankakee Neighborhoods

Neighborhoods: Percentage Vulnerable on One or More Domains

ID	Neighborhood	%
1	Aroma Park	25%
2	Blatt Subdivision**	29%
3	Bordeaux	13%
4	Briar Cliff	13%
5	Charlton	20%
6	Eastridge	22%
7	Evergreen Acres	42%
8	Hunter's Run	44%
9	Meadows	32%
10	North Kankakee	37%
11	Old Bourbonnais	33%
12	Riverview	23%
13	Royal Kankakee	24%
14	Sunnyside	38%
15	West Kankakee	30%
Neighborhood-wide		28%



Legend



Transforming Early Childhood Community Systems

THE SCIENCE FOR A BETTER START

TECCS@mednet.ucla.edu

** EDI participation rate is below the recommended threshold; interpret results with caution.

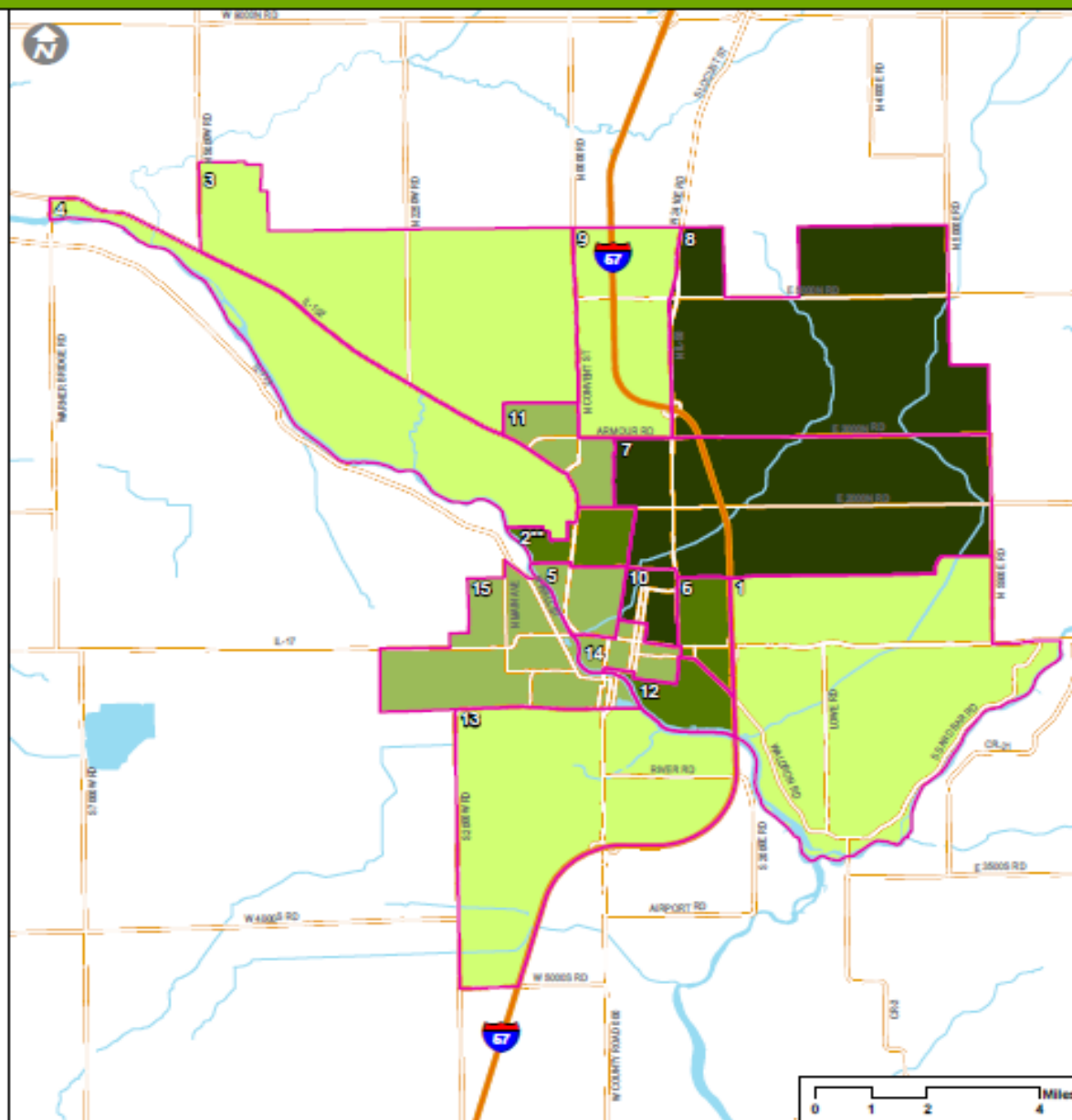
The UCLA Center for Healthier Children, Families and Communities, under license from McMaster University, is implementing the Early Development Instrument with its sub licensees in the US. The EDI is the copyright of McMaster University and must not be copied, distributed or used in any way without the prior consent of UCLA or McMaster. © McMaster University, The Offord Centre for Child Studies

EDI 2017: Children Vulnerable in the Social Competence Domain in Kankakee Neighborhoods

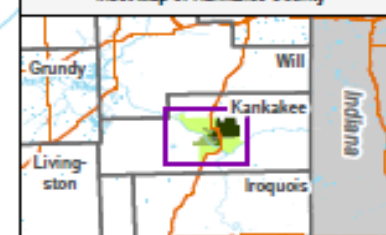
Neighborhoods: Percentage Vulnerable in the Social Competence Domain

ID	Neighborhood	%
1	Aroma Park	8%
2	Blatt Subdivision**	16%
3	Bordeaux	8%
4	Briar Cliff	5%
5	Charlton	11%
6	Eastbridge	14%
7	Evergreen Acres	22%
8	Hunter's Run	17%
9	Meadows	8%
10	North Kankakee	30%
11	Old Bourbonnais	11%
12	Riverview	14%
13	Royal Kankakee	5%
14	Sunnyside	12%
15	West Kankakee	12%
Neighborhood-wide		12%

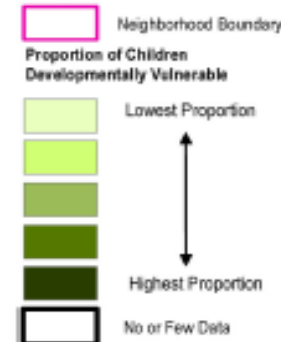
** EDI participation rate is below the recommended threshold; interpret results with caution.



Inset Map of Kankakee County



Legend



Transforming
Early
Childhood
Community
Systems

THE SCIENCE FOR A BETTER START
TECCS@mednetucla.edu

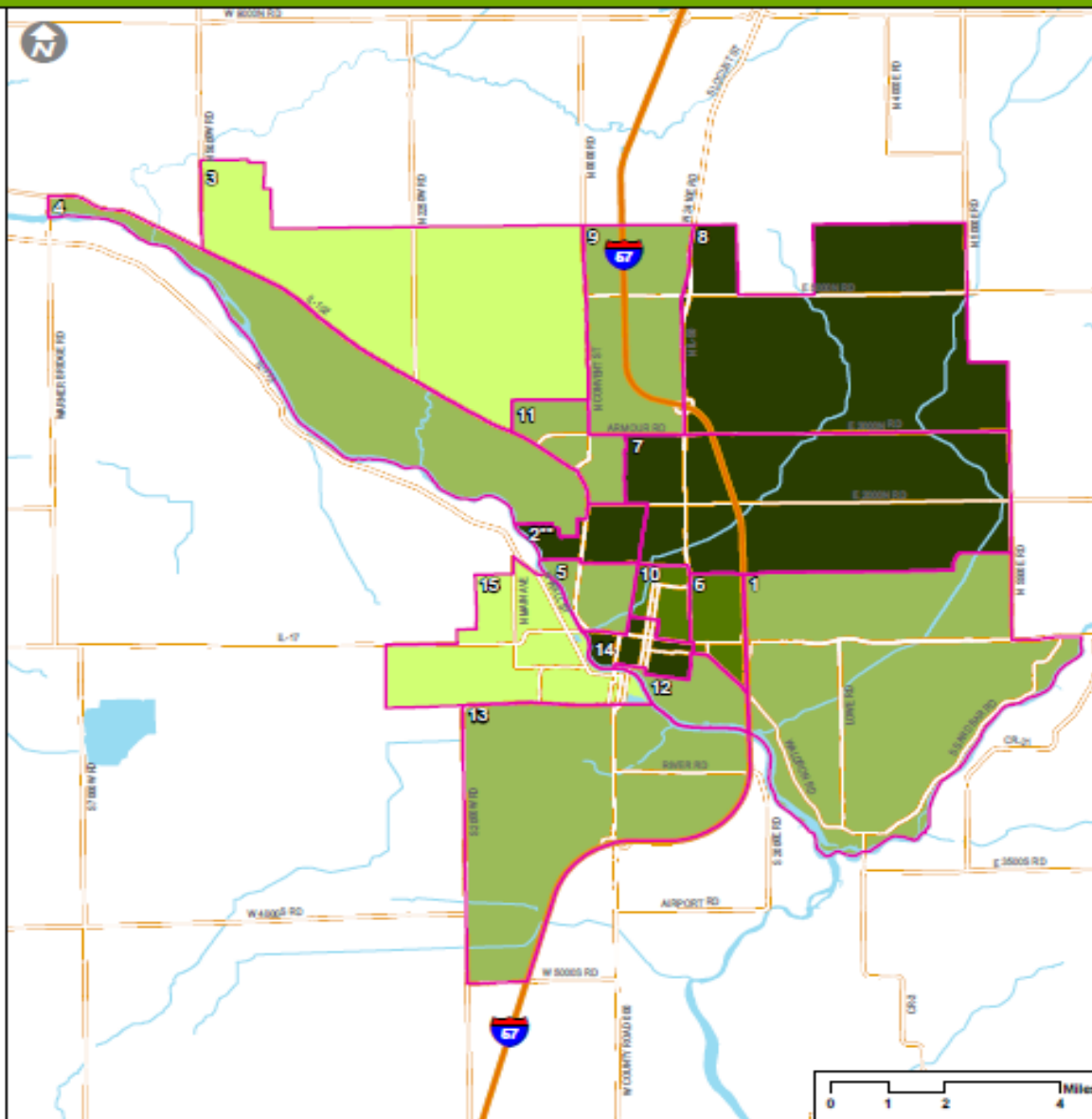
The UCLA Center for Healthier Children, Families and Communities, under license from McMaster University, is implementing the Early Development Instrument with its sub licensees in the US. The EDI is the copyright of McMaster University and must not be copied, distributed or used in any way without the prior consent of UCLA or McMaster. © McMaster University, The Offord Centre for Child Studies

EDI 2017: Children Vulnerable in the Emotional Maturity Domain in Kankakee Neighborhoods

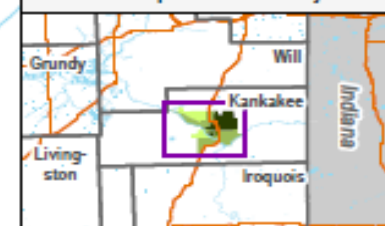
Neighborhoods: Percentage Vulnerable in the Emotional Maturity Domain

ID	Neighborhood	%
1	Aroma Park	14%
2	Blatt Subdivision**	19%
3	Bordeaux	8%
4	Briar Cliff	10%
5	Chanton	11%
6	Eastridge	17%
7	Evergreen Acres	25%
8	Hunter's Run	22%
9	Meadows	11%
10	North Kankakee	15%
11	Old Bourbonnais	13%
12	Riverview	13%
13	Royal Kankakee	14%
14	Sunnyside	20%
15	West Kankakee	6%
Neighborhood-wide		14%

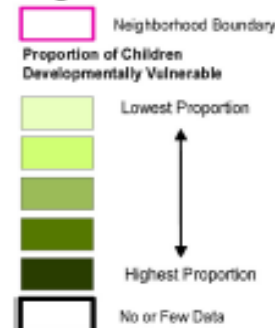
** EDI participation rate is below the recommended threshold; interpret results with caution.



Inset Map of Kankakee County



Legend



Transforming
Early
Childhood
Community
Systems

THE SCIENCE FOR A BETTER START
TECCS@mednet.ucla.edu

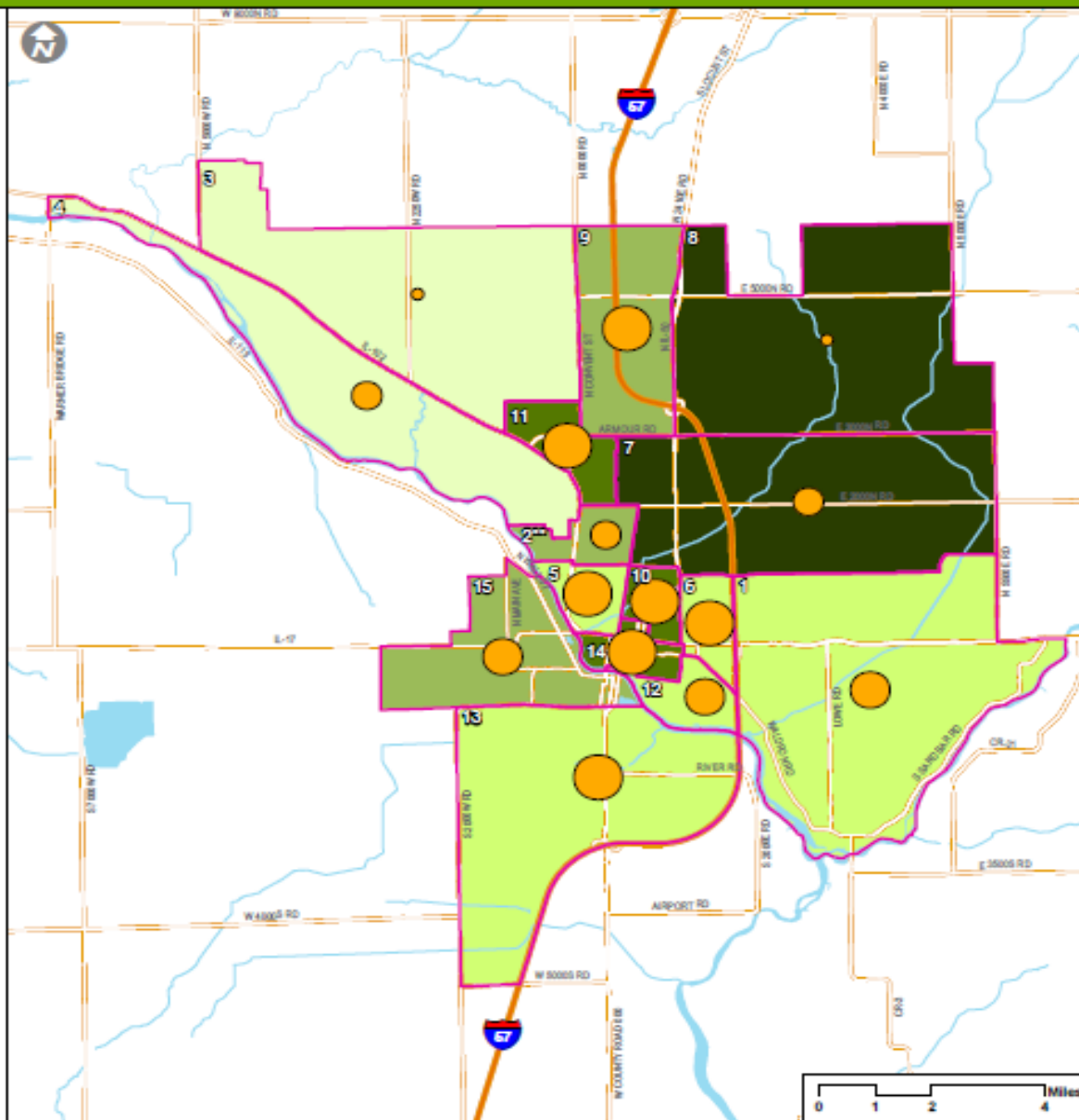
The UCLA Center for Healthier Children, Families and Communities, under license from McMaster University, is implementing the Early Development Instrument with its sub licensees in the US. The EDI is the copyright of McMaster University and must not be copied, distributed or used in any way without the prior consent of UCLA or McMaster. © McMaster University, The Offord Centre for Child Studies

EDI 2017: Percentage of Families with Children in Poverty with Children Vulnerable on One or More Developmental Domains in Kankakee Neighborhoods

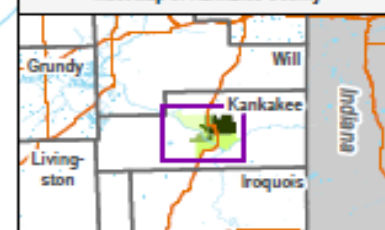
Neighborhoods: Percentage Vulnerable on One or More Domains

ID	Neighborhood	%
1	Aroma Park	25%
2	Blatt Subdivision**	29%
3	Bordeaux	13%
4	Briar Cliff	13%
5	Charlton	20%
6	Eastringe	22%
7	Evergreen Acres	42%
8	Hunter's Run	44%
9	Meadows	32%
10	North Kankakee	37%
11	Old Bourbonnais	33%
12	Riverview	23%
13	Royal Kankakee	24%
14	Sunnyside	38%
15	West Kankakee	30%
Neighborhood-wide		28%

** EDI participation rate is below the recommended threshold; interpret results with caution.



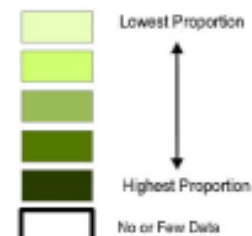
Inset Map of Kankakee County



Legend

Neighborhood Boundary

Proportion of Children Developmentally Vulnerable



Percentage of Families with Children in Poverty



Transforming
Early
Childhood
Systems

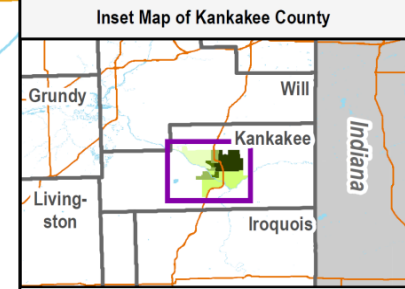
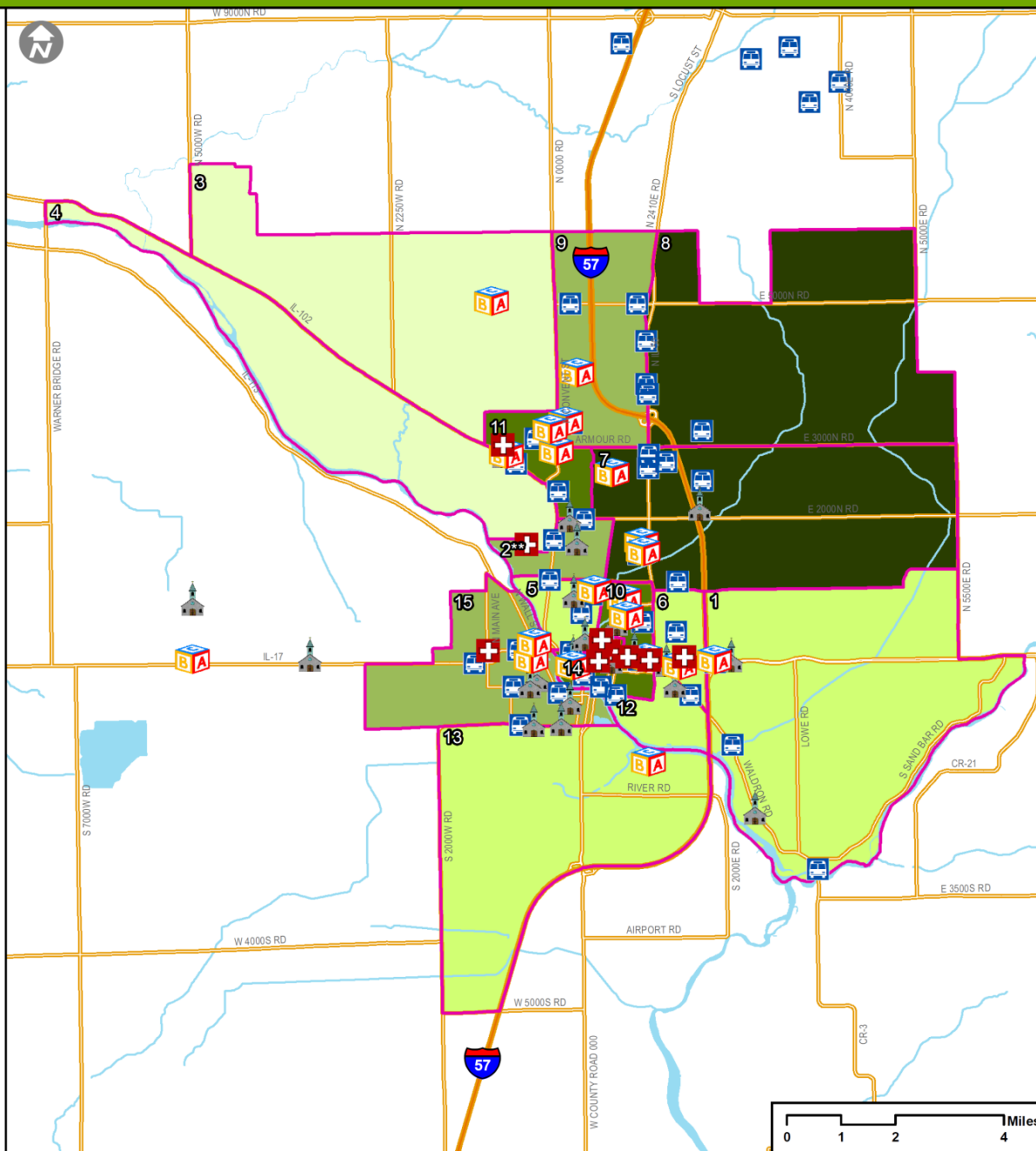
THE SCIENCE FOR A BETTER START
TECCS@mednetucla.edu

The UCLA Center for Healthier Children, Families and Communities, under license from McMaster University, is implementing the Early Development Instrument with its sub licensees in the US. The EDI is the copyright of McMaster University and must not be copied, distributed or used in any way without the prior consent of UCLA or McMaster. © McMaster University, The Oxford Centre for Child Studies

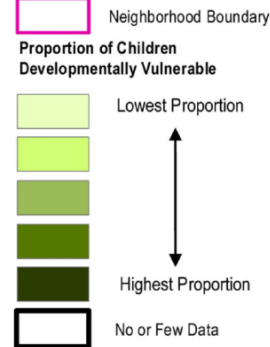
EDI 2017: Community Assets with Children Vulnerable on One or More Developmental Domains in Kankakee Neighborhoods

Neighborhoods: Percentage Vulnerable on One or More Domains

ID	Neighborhood	%
1	Aroma Park	25%
2	Blatt Subdivision**	29%
3	Bordeaux	13%
4	Briar Cliff	13%
5	Charlton	20%
6	Eastridge	22%
7	Evergreen Acres	42%
8	Hunter's Run	44%
9	Meadows	32%
10	North Kankakee	37%
11	Old Bourbonnais	33%
12	Riverview	23%
13	Royal Kankakee	24%
14	Sunnyside	38%
15	West Kankakee	30%
Neighborhood-wide		28%



Legend



Community Assets



** EDI participation rate is below the recommended threshold; interpret results with caution.

Case Studies on Use of EDI

- **San Antonio, TX**

- Developed tools for parents distributed in childcare and home visiting

- **City of Pasadena**

- Informed development of recently passed Early Childhood Development Policy

- **Petal, MS**

- Supported launch of “conscious discipline” training/curriculum for teachers

- **Ector County, TX**

- Offered free summer camps for incoming kindergarteners who lacked access to PK to improve gross motor skills

And all the children are well when...

- Communities lead in interpreting data and developing solutions
- Cross-sector (unusual) stakeholders contribute to the development and implementation of solutions
- Precise data drive tailored interventions and inform resource distribution

**Generous support for the pilot project
provided by:**

ROBERT R.
McCORMICK
FOUNDATION

&

Anonymous Donor

For more information:

Cristina Pacione-Zayas, PhD
Director of Policy
Erikson Institute

pacionezayas@erikson.edu
(312) 566-4470