

Sum Thing's Up

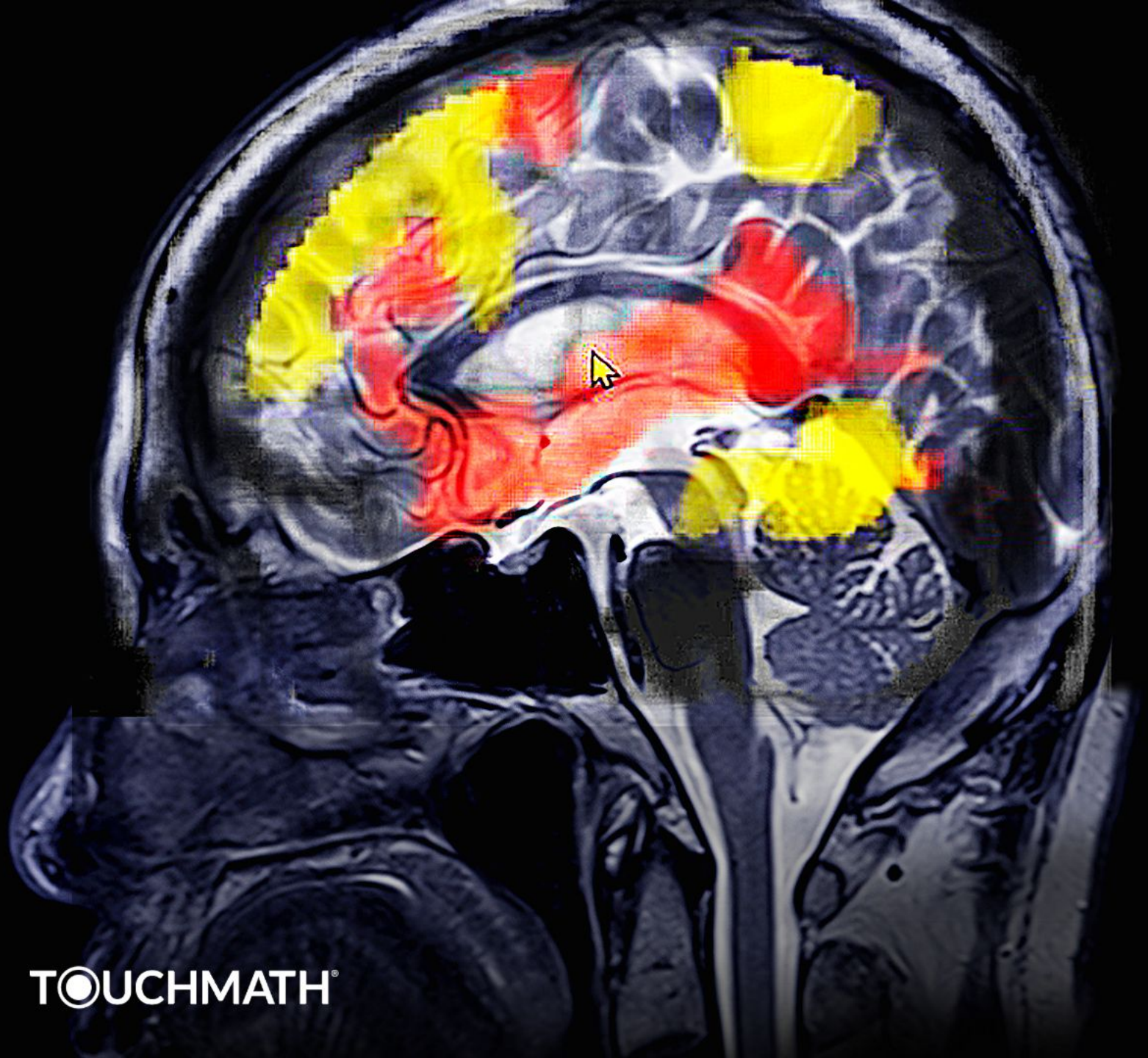
Dyscalculia

Presented by: Dr. Angel Filer, Director of Training & Learning at TouchMath

Dyscalculia

/ˌdɪs.kæɪl'kjuː.li.ə/ dis-cal-cue-lee-uh

A multi-component neurodevelopmental disorder that comprises impaired development and disruptions in the neural pathways in the distributed inter-connected regions of the brain that process numerical information and perform math problem-solving.



math



language

What Does Dyscalculia Look Like?

+ - × ÷

Number Sense

Accurate Calculation

Math

ng Arithmetic Facts

Accurate Calculation

Mathematical Reasoning

Number Sense

ng Accurate Calculation

Arithmetic Facts

Number Sense Accurate Calculation Math

5-7%

10:1

45-60%

TOUCHMATH®



Screening
Intervention
Innovation



28% ↑